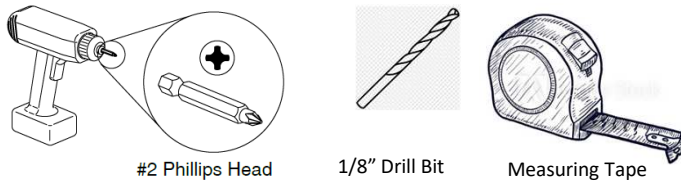


# LOK TRAINING TABLES

## Assembly Instruction for Draw Latch Linking Kit

1. Mark and drill pilot holes for the latch keeper at  $1/8"$   $\varnothing$  x  $1/2"$  deep per locations shown in Diagram-A.
2. Place the keeper in position. The alignment pin (Fig.1) on the bottom of the keeper should fit into  $1/8"$  the hole nearest the end of the table. Attach latch keepers using (1) #8 x 1-1/2" screw per keeper.
3. Mark and drill pilot holes for draw latch at  $1/8"$   $\varnothing$  x  $1/2"$  deep per locations shown in Diagram-B.
4. Attach draw latches and keeper using (2) #8x 1-1/2" screws per latch

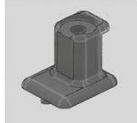
### Recommended tools



### Hardware enclosed



#8 x 1-1/2"  
Panhead  
Screws  
Qty= 6

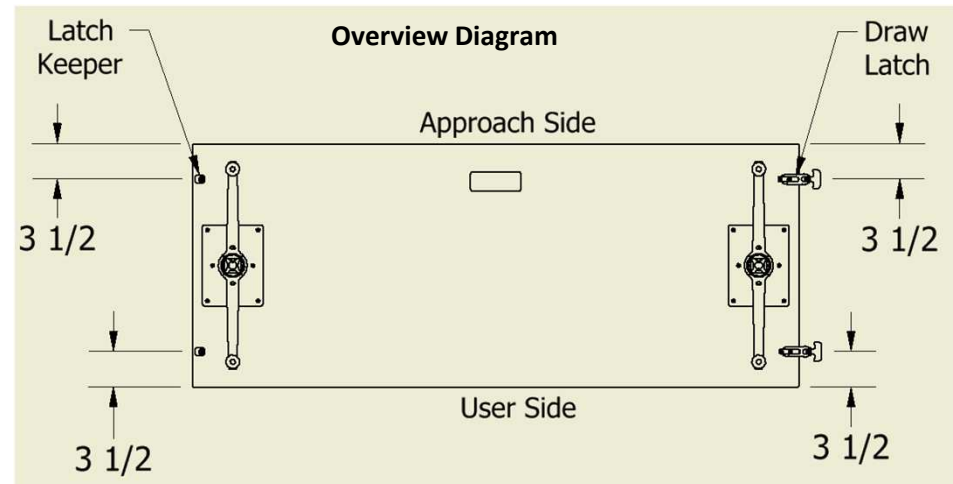


Latch Keeper  
Qty: 2

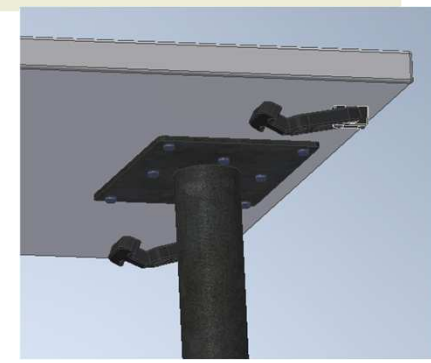


Draw Latch  
Qty: 2

**NOTE: all screws provided must be installed for proper installation and compliance with product warranty.**



Latch in connected position



Latch in stowed position

# LOK TRAINING TABLES

## Assembly Instruction for Draw Latch Linking Kit (Cont.)

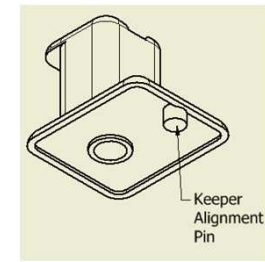


Fig. 1

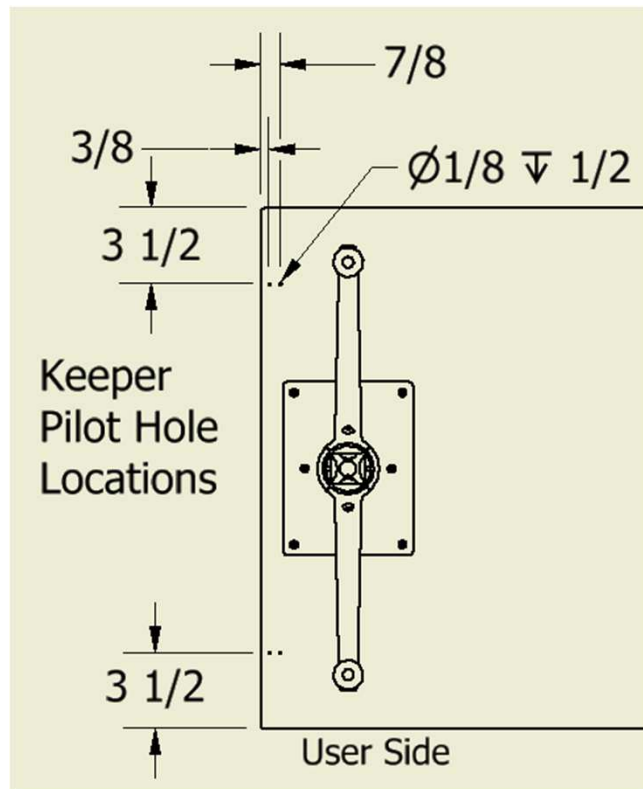


Diagram-A

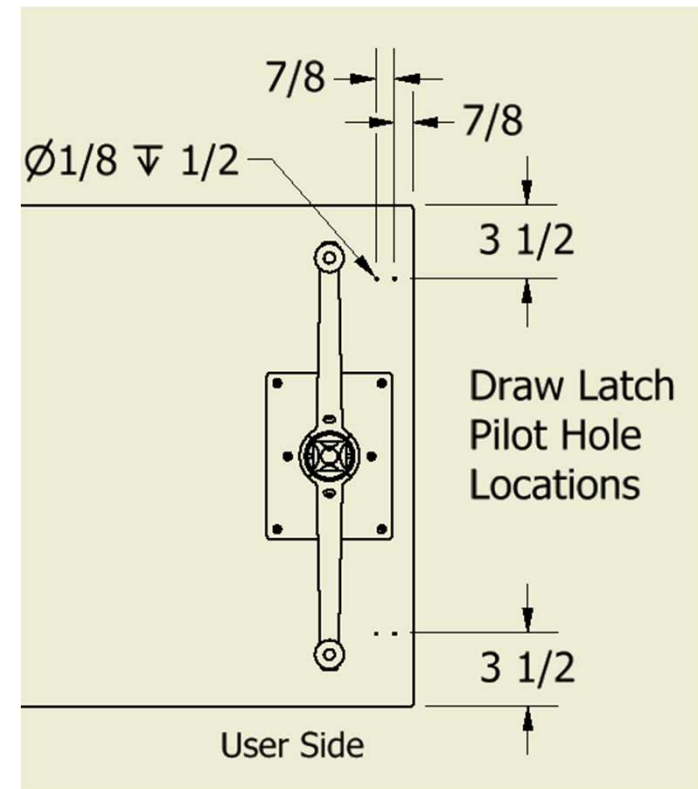


Diagram-B